

# VERITY® GPC Cleanup System

Remove analytical interferences while improving method efficiency and reproducibility



SPEC SHEET | PURIFICATION

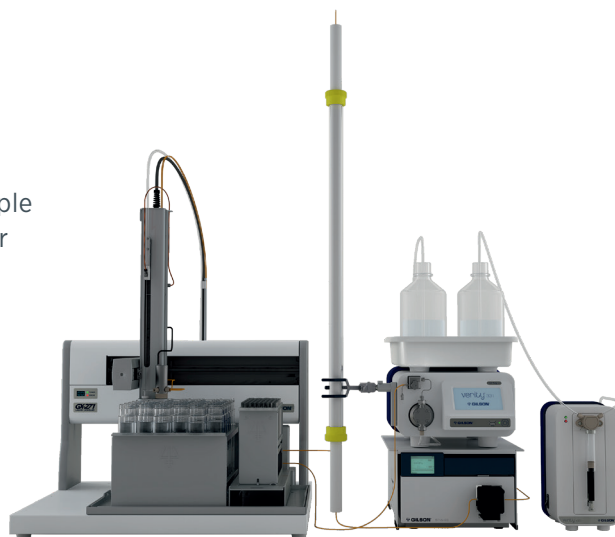
VERITY® GPC CLEANUP SYSTEM

## MAKE YOUR LAB LIFE EASIER

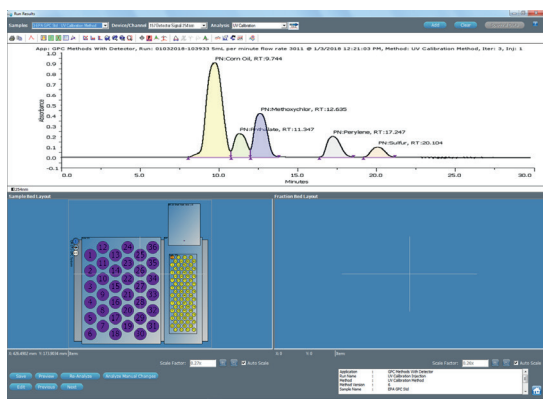
The VERITY® GPC Cleanup System uses gel permeation chromatography (GPC) to remove contaminants from your sample matrices prior to analysis, producing more reliable results, fewer sample repeats, and less system downtime.

## YOUR KEY ADVANTAGES

- Extends column life
- Reduces sample carryover
- Automates cleanup of up to 80 sample extracts
- Collects multiple fractions from the same extract
- Meets government requirements for GPC cleanup



**Figure 1**  
VERITY® GPC Cleanup System



**Figure 2**  
TRILUTION® LC Software

## EXPERIENCE COMPLETE CONTROL OF YOUR SYSTEM

TRILUTION® LC Software is easy-to-use and designed to meet your GPC needs.

- **No programming required:** Methods specific to GPC post-extraction cleanup processes are included
- **Flexible to your science:** Bed layout includes common racks that can be exchanged in the software to allow collection into different sized vessels
- **Keep your costs to a minimum:** Error handling and shutdown methods minimize solvent waste and sample loss

## VERITY GPC CLEANUP SYSTEM SPECIFICATIONS

### PUMPING SYSTEM

Isocratic Pump	VERITY® 3011 Isocratic Pump: Reciprocating pump with single-piston, quick-connect pump head, integrated pulse dampener and pressure sensor
Flow Rate Range	50 µL/min to 10 mL/min with 10 SS pump head
Flow Accuracy	± 2% of the requested flow rate with water 10 SS Pump Head: 0.1 to 10 mL/min
Flow Precision	< 1% relative standard deviation (RSD) with water 10 SS Pump Head: 0.1 to 10 mL/min
Operating Pressure	0–600 bar (0–8702 psi)

### AUTOSAMPLER / FRACTION COLLECTOR

Automated Liquid Handler	GX-271 Liquid Handler with GX Direct Injection Module
Injection Volume	20 µL to 5 mL (5 mL standard loop)
Syringe pump	VERITY® 4020 Single Syringe Pump with 10 mL Syringe
Vertical Punch Strength	4.5 kg (10 lb) for septum piercing
Sample Rack Capacity Options	13 x 100 mm tubes, 16 x 100 mm tubes Other options available upon request
Collection Rack Capacity Options	25 x 200 mm tubes, 38 x 200 mm tubes, Boston round bottles (125 mL or 250 mL), Caliper TuboVap™ evaporation tubes (50 mL and 200 mL), Labconco RapidVap evaporation vessels (100 mL flat, 450 mL flat or with stem), flasks for rotary evaporation (125 mL and 250 mL) and other options upon request

### UV DETECTOR

Detector	157 UV-VIS Detector
Wavelength Range	190–750 nm
Flow Cell	0.5–2 mm pathlength

### SOFTWARE CONTROL

Software Control	TRILUTION® LC Software v3.0 Service Pack 8 or above
------------------	---

### COLUMNS AND MANUFACTURING STANDARDS

Columns	Compatible with various columns from low pressure glass to high pressure stainless steel
Manufacturing Standards	Meets applicable safety and EMC certification standards; UL and CE certified

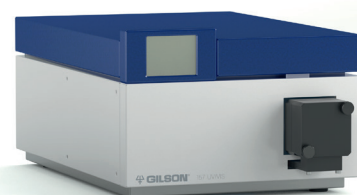
LEARN MORE ABOUT VERITY®  
GPC SYSTEM COMPONENTS AT  
GILSON.COM



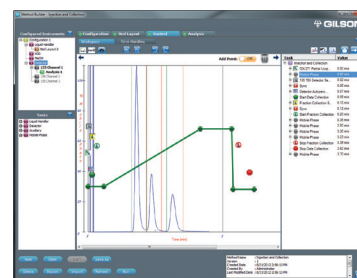
VERITY® 3011 Isocratic Pump



VERITY® 4020 Syringe Pump and  
GX-271 Liquid Handler



157 UV-VIS Detector



TRILUTION® LC Software

[www.gilson.com/ContactUs](http://www.gilson.com/ContactUs)

LT380147-01