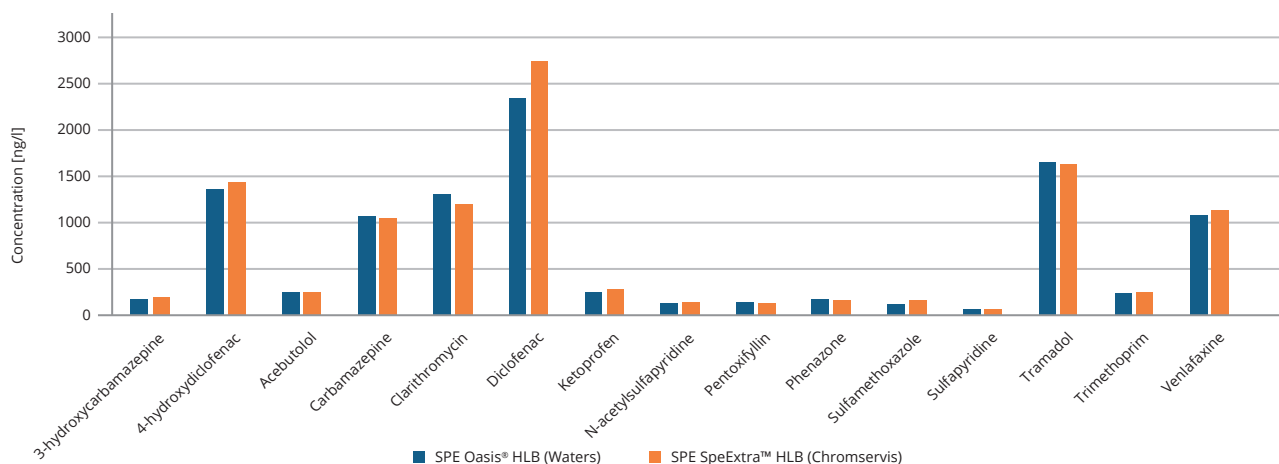


SPE columns



SpeExtra™ is a new range of SPE columns for your sample preparation.

Florisil® and HLB columns are suitable for use in the environmental and toxicology area. The SpeExtra™ HLB SPE column is based on a modified polymer of 100Å pore size. It offers a high surface area of >825 m²/g. The working pH range is from pH 1 to pH 13. The loading capacity is 20 %. It has been developed to clean a broad range of hydrophobic/hydrophilic compounds across various matrixes (plasma, urine, oil, water etc.).



Comparison of SpeExtra™ with Waters Oasis® HLB cartridges

SpeExtra™ C18	Sorbent mass mg	Particle size µm	Volume mL	Part Number	Box
	50	50	1	SPE-5812-DH01	50 pcs
	100	50	1	SPE-5812-DB01	100 pcs
	100	50	3	SPE-5812-DB03	50 pcs
	200	50	3	SPE-5812-DC03	50 pcs
	200	50	6	SPE-5812-DC06	30 pcs
	500	50	3	SPE-5812-DD03	50 pcs
	500	50	6	SPE-5812-DD06	30 pcs

SpeExtra™ C8	Sorbent mass mg	Particle size µm	Volume mL	Part Number	Box
	50	50	1	SPE-5813-DH01	50 pcs
	100	50	1	SPE-5813-DB01	100 pcs
	100	50	3	SPE-5813-DB03	50 pcs
	200	50	3	SPE-5813-DC03	50 pcs
	500	50	3	SPE-5813-DD03	50 pcs
	500	50	6	SPE-5813-DD06	30 pcs

SpeExtra™ Phenyl	Sorbent Mass mg	Particle size µm	Volume mL	Part Number	Box
	100	50	1	SPE-5961-DB01	100 pcs
	100	50	3	SPE-5961-DB03	50 pcs
	500	50	3	SPE-5961-DD03	50 pcs
	200	50	6	SPE-5961-DC06	30 pcs
	500	50	6	SPE-5961-DD06	30 pcs

SpeExtra™ HLB Clinical	Sorbent mass mg	Particle size µm	Volume ml	Part Number	Box
	30	30	1	SPE-5804-AA01	50 pcs



SPE columns

SPEEXTRA™

SPE columns

SpeExtra™ HLB Enviro	Sorbent Mass mg	Particle size µm	Volume ml	Part Number	Box
	60	30	1	SPE-5804-AG01	50 pcs
	60	60	1	SPE-5804-EG01	50 pcs
	60	30	3	SPE-5804-AG03	50 pcs
	60	60	3	SPE-5804-EG03	50 pcs
	150	30	6	SPE-5804-AI06	30 pcs
	150	60	6	SPE-5804-EI06	30 pcs
	200	30	3	SPE-5804-AC03	50 pcs
	200	30	6	SPE-5804-AC06	30 pcs
	200	30	6	SPE-5804-AC06-B	200 pcs
	200	60	3	SPE-5804-EC03	50 pcs
	200	60	6	SPE-5804-EC06	30 pcs
	500	30	6	SPE-5804-AD06	30 pcs
	500	60	6	SPE-5804-ED06	30 pcs

SpeExtra™ HXC	Sorbent Mass mg	Particle size µm	Volume ml	Part Number	Box
	200	60	3	SPE-5841-EC03	50 pcs

SpeExtra™ SAX	Sorbent Mass mg	Particle size µm	Volume ml	Part Number	Box
	50	50	1	SPE-5814-DH01	50 pcs
	100	50	1	SPE-5814-DB01	100 pcs
	100	50	3	SPE-5814-DB03	50 pcs
	200	50	3	SPE-5814-DC03	50 pcs
	500	50	3	SPE-5814-DD03	50 pcs
	1000	50	6	SPE-5814-DE06	30 pcs

SpeExtra™ SCX	Sorbent Mass mg	Particle size µm	Volume ml	Part Number	Box
	50	50	1	SPE-5815-DH01	50 pcs
	100	50	1	SPE-5815-DB01	100 pcs
	100	50	3	SPE-5815-DB03	50 pcs
	200	50	3	SPE-5815-DC03	50 pcs
	500	50	3	SPE-5815-DD03	50 pcs

SpeExtra™ WAX	Sorbent Mass mg	Particle size µm	Volume ml	Part Number	Box
	60	30	3	SPE-5956-AG03	50 pcs
	100	30	6	SPE-5956-AB06	30 pcs
	150	30	6	SPE-5956-AI06	50 pcs
	200	30	6	SPE-5956-AC06	30 pcs
	500	30	6	SPE-5956-AD06	30 pcs

SpeExtra™ Florisil® (pesticide grade)	Sorbent Mass mg	Particle size µm	Volume ml	Part Number	Box
	1000	150/250	6	SPE-5805-NE06	30 pcs
	1000	150/250	15	SPE-5805-NE15	20 pcs
	500	150/250	3	SPE-5805-ND03	50 pcs

SpeExtra™ Florisil® (ultra pure)	Sorbent Mass mg	Particle size µm	Volume ml	Part Number	Box
	2000	150/250	15	SPE-5805-NF15	20 pcs

SPE columns

SpeExtra™ Si	Sorbent Mass mg	Particle size µm	Volume ml	Part Number	Box
	500	50	3	SPE-5872-DD03	50 pcs
	500	50	6	SPE-5872-DD06	30 pcs
	1000	50	6	SPE-5872-DE06	30 pcs



12-position Vacuum SPE manifold (p/n SPE-5869-000A)